



VIDEO GUIDE



nuvio™

Nuvio, Inc - Nuvio One

© Copyright 2024

This document provides comprehensive instructions and safety information for the Nuvio One. Actual products may vary slightly from descriptions herein. For the most current manual, visit our website or download it at www.nuviomobility.com.

We are not responsible for issues arising from improper use of the product.

Table Of Contents

INTRODUCTION & IMPORTANT INFORMATION	03
TECHNICAL SPECIFICATIONS	04
GETTING STARTED	05
SAFE USE	06
WARNINGS	07
FOLDING	08
HEIGHT ADJUST	09-10
BRAKING CONTROL	11
BRAKE ADJUST	12
STAND ASSIST	13
STOW AWAY SEAT	14
WARRANTY	15-16

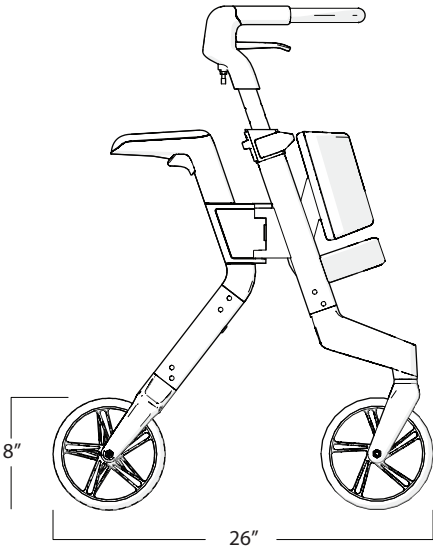
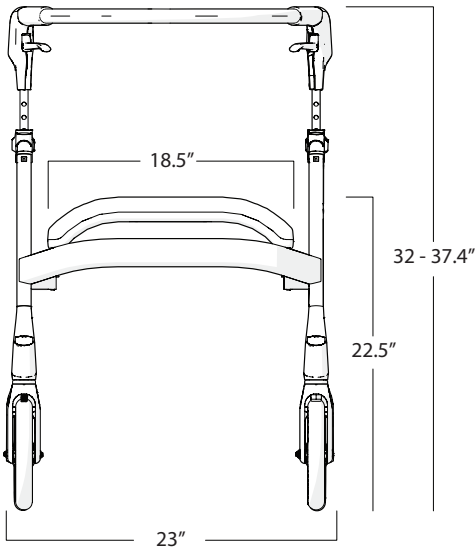
Introduction

Welcome to the user guide for the Nuvio One. This guide provides detailed instructions on the safe setup, use, and maintenance of your Nuvio One.

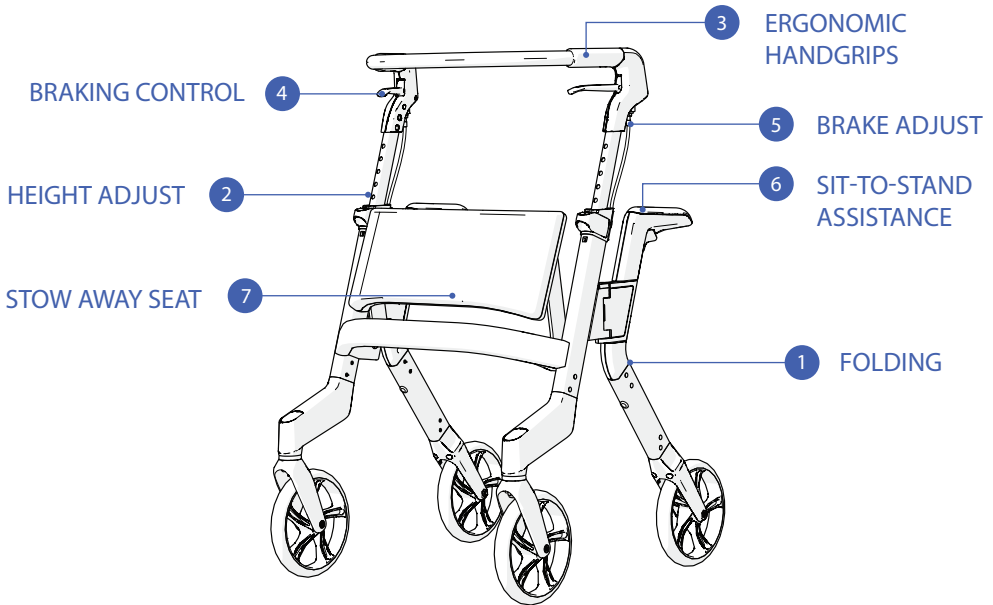
We hope you enjoy using your Nuvio One rollator!

Important Information

- This guide is specifically for the Nuvio One.
- The Nuvio One is a rollator and sit-to-stand aid, suitable for individuals up to 300 lbs.
- Read this guide carefully before using your rollator. Keep these instructions in a safe place for future reference.
- Ensure your safety and that of others by using this product correctly.
- Regular cleaning is necessary to maintain your Nuvio One in optimal condition. Clean your Nuvio One regularly to maintain it in optimal condition. Use a damp cloth to clean all surfaces.
- Store the Nuvio One indoors in a dry place.
- Parts of the Nuvio One may fade or discolor when exposed to sunlight for extended periods.
- Avoid extreme temperatures.
- Use only approved parts from Nuvio, Inc. for replacements or repairs. The warranty is void if the product is damaged by misuse, overloading, incorrect folding or unfolding, or use of non-approved parts or accessories. Warranty details are in the Warranty section of this guide.
- You can find the serial and article numbers on the product sticker on the bottom portion of one of the rear legs.



Weight	9.07 kg / 20 lbs
Seat Height	57.15 cm / 22.5 in
Seat Width	47cm / 18.5 in
Weight Capacity	136kg / 300 lbs
Overall Width	58.4 cm / 23 in
Overall Length	66 cm / 26 in
Depth Folded	38 cm / 15 in
Height	81.3 - 95 cm / 32 - 37.4 in
Wheel Diameter	20.3 cm / 8 in



Delivery Checklist

Ensure Nuvio One package includes:

- Fully assembled Nuvio One
- 1 User guide

Indications for Use

The Nuvio One functions as a rollator: Provides dependable support for individuals with limited walking capabilities, suitable for both indoor and outdoor use. Nuvio One is also equipped with additional sit-to-stand support for assistance safely transitioning from sitting to standing using built-in-handles.

Unsuitable Conditions

The Nuvio One is not suitable for:

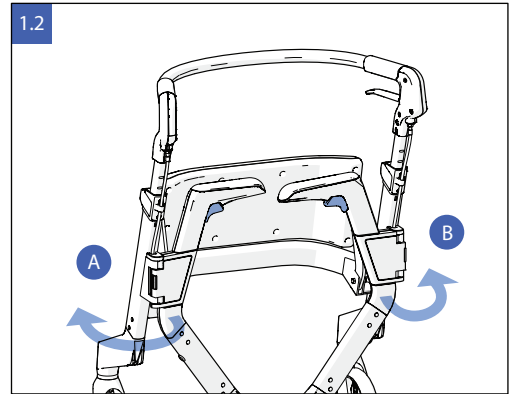
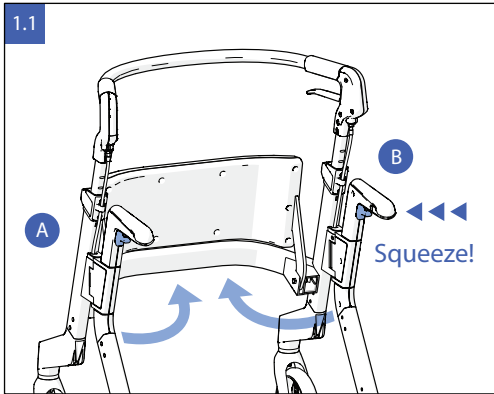
- Individuals with impaired vision that significantly affects navigation.
- Individuals with severe balance disorders.
- Those who cannot independently manage the device due to severe mobility restrictions or cognitive impairments.
- Individuals exceeding 300 lbs in weight.

Safe Use of the Nuvio One

- The Nuvio One is designed to provide support when walking both outdoors and indoors.
- Always place your hands over the top handrail handgrips, indicated by rubberized grip material and located directly above the brake levers. In this position, you can lean on the handlebar with your full weight.
- Do NOT use any area of the top handrail without rubberized grips for gripping while walking or leaning.
- Use the parking brakes on both sides when you are not walking with the Nuvio One.
- Check the brakes before each use. If the brakes are not functioning correctly, have them adjusted by a professional to ensure safety.
- The brakes can be gently applied to reduce speed but should NOT be continuously engaged while walking.
- When sitting on the Nuvio One seat, ensure both brakes are engaged, both when sitting down and standing up.
- Only sit on the Nuvio One if your feet can rest on the ground while seated.
- If you need to lift the Nuvio One, for example, to place it in a car, fold the Nuvio One and lift it by the metal frame, not the handlebar.
- Do NOT use the Nuvio One on stairs, moving sidewalks, uneven or rough surfaces with holes, or escalators
- The Nuvio One is designed as a rollator for one person at a time and should NOT be used as a wheelchair.
- Assistance is recommended for users who are at risk of falling.
- Nuvio One is NOT intended for carrying or transporting children, pets, or livestock.
- The Nuvio One's Sit-to-Stand assist handles are intended for support standing up from a chair only. Do NOT use while walking.
- Do NOT squeeze the folding triggers while using stand assist feature.
- To avoid the seat folding friction being unintentionally reduced, do NOT apply lubricant to the seat hinge joint.

Warnings

- Exercise caution when folding or unfolding the Nuvio One and raising or lowering the height adjustable top handrail to avoid pinching, cuts, or other injuries.
- Ensure height adjustment clasps and folding mechanism triggers are securely locked before using the Nuvio One.
- Check that the height adjustment locks are engaged.
- The rollator should be kept close to your body during walking and standing, with the seat fully up and stowed, for safety and best support.
- The Nuvio One is designed for easy operation. Regularly check to ensure you can perform all necessary actions independently or determine if you need assistance.
- Keep the Nuvio One away from open flames and heat sources, such as electric or gas heaters.
- Cleaning with disinfectants should be done by authorized personnel only.
- Do NOT use the Nuvio One if any part is broken, damaged, defective, incomplete, or missing.
- Regularly inspect all screws and fasteners, and tighten them if needed.
- Avoid ascending or descending slopes steeper than 15% or crossing inclines at angles greater than 5%.
- Ensure that all wheels remain on the ground at all times to maintain proper balance of the Nuvio One.



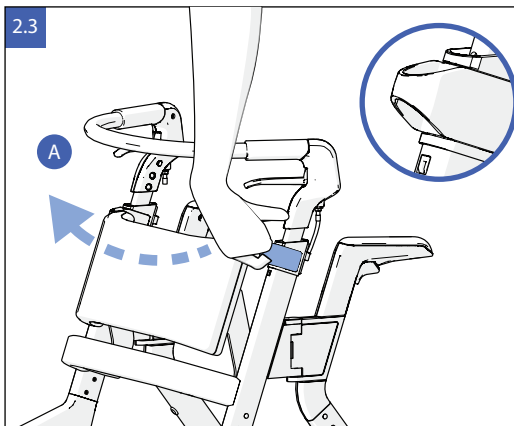
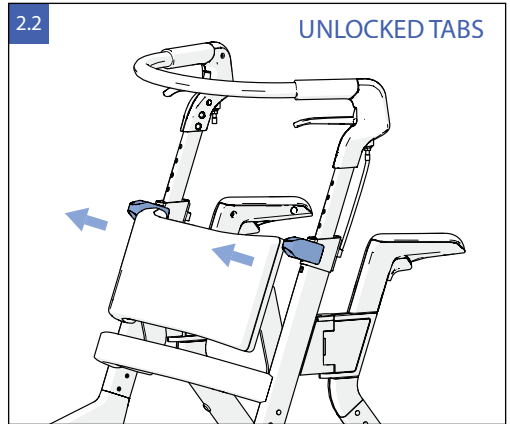
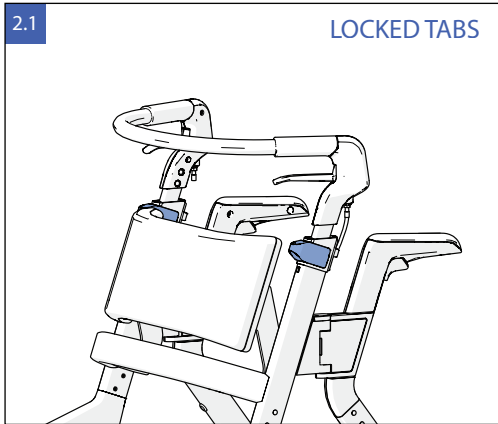
1.1 Folding

Squeeze the trigger beneath the lower stand assist handrail and push the rear leg inward, one at a time (see Figure 1.1A and 1.1B).

1.2 Unfolding

Squeeze the trigger beneath the lower stand assist handrail and pull the rear leg outward, one at a time, starting with the leg furthest from the seat (see Figure 1.2A and 1.2B). Listen for a click on each side.

HEIGHT ADJUST

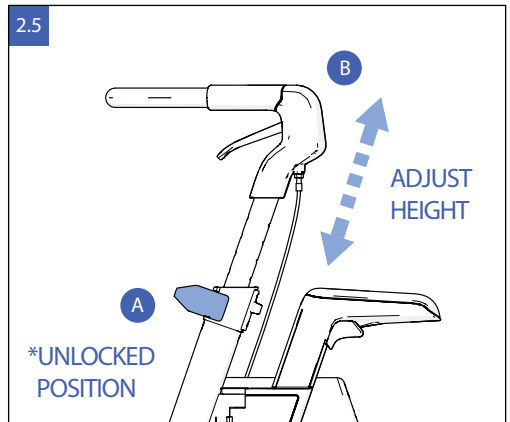
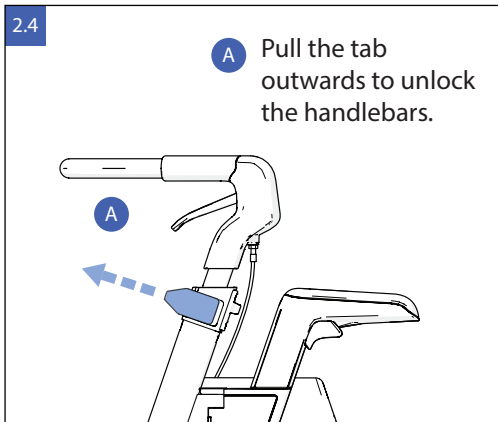


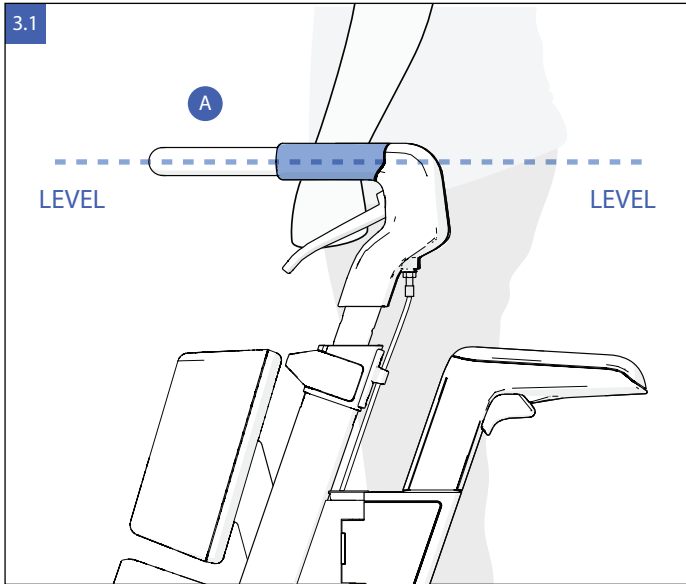
*Insert fingers into the locking tab grooves. When re-locking tabs, push only from the front to avoid pinching. Keep fingers clear of the back of the tab.

A

HOW TO ADJUST HEIGHT

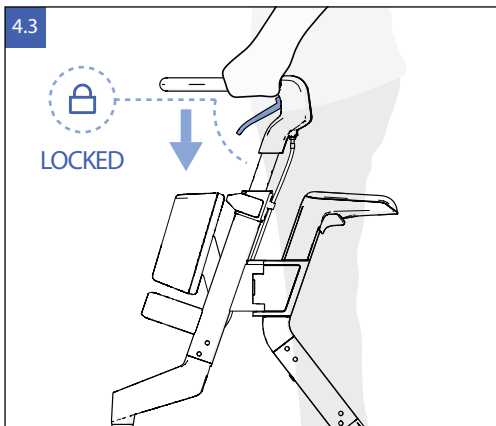
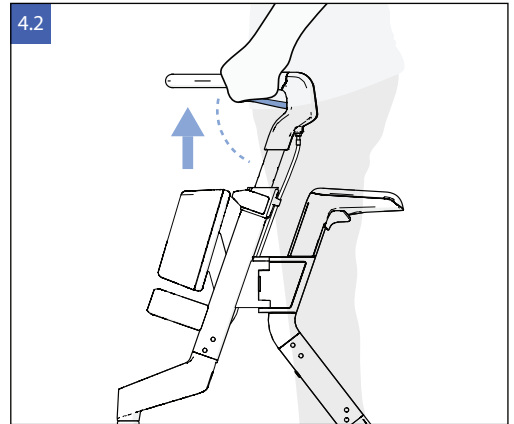
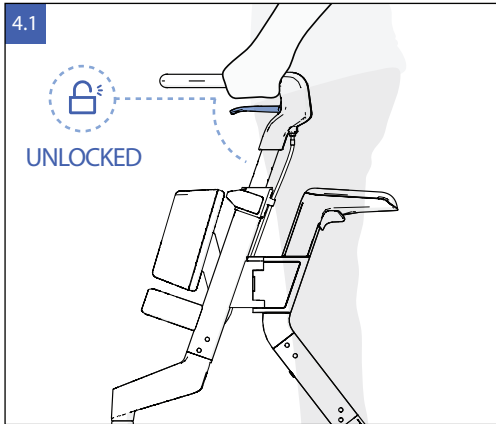
Pull the tab outward to unlock the handlebars. Once unlocked, adjust the handlebar height to suit your needs.





Adjust the handlebar height as necessary before use. When standing upright, the handgrips should align with the height of your wrists (see Figure 3.1A). If you're uncertain, please seek advice from your physical or occupational therapist.

- Release handlebar tab locks on either side (see Figure 2.4A). The telescoping posts will now move freely up and down (see Figure 2.5B).
- Adjust the handlebar.
- Lock tabs on either side, listening for a click and checking that the handlebar is in a secure position.

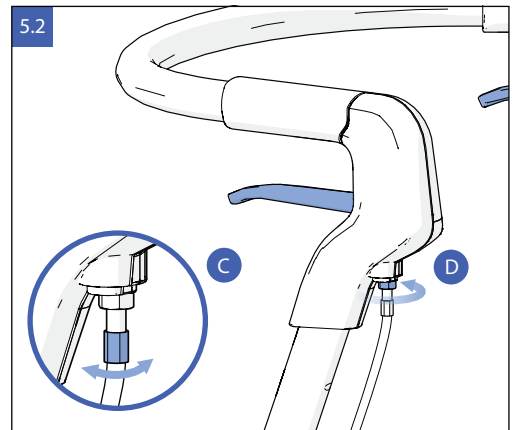
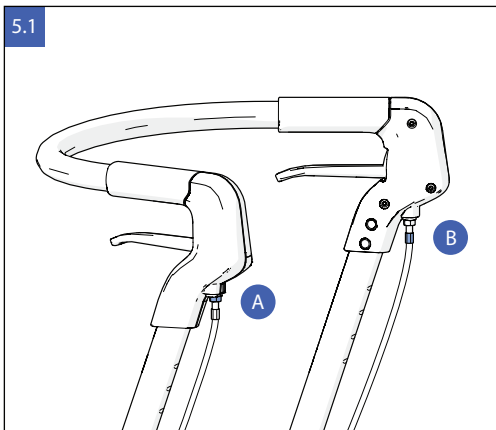


The Nuvio One has independent brakes acting on each of the rear wheels. Follow the provided instructions to ensure the brakes are properly adjusted for safe use:

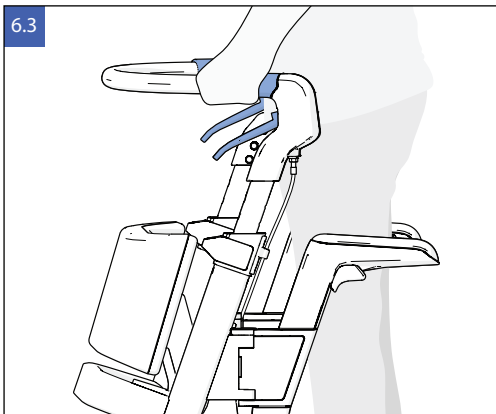
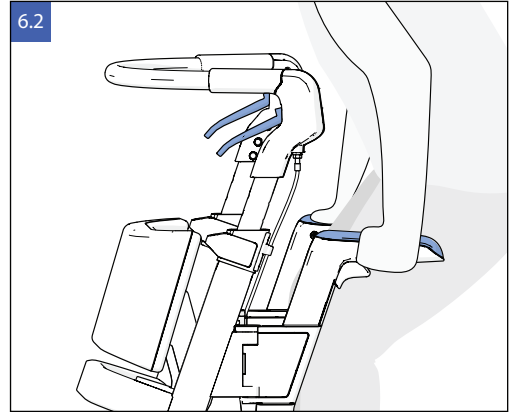
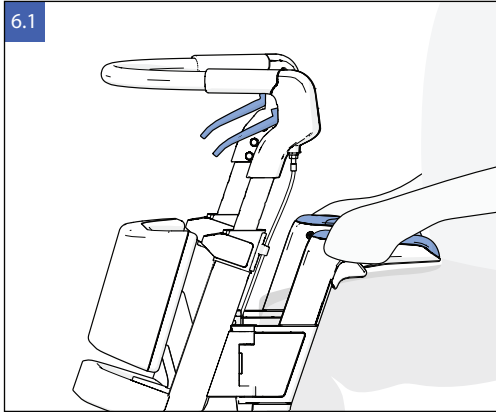
- To activate the brake, squeeze the brake levers upward. The levers will return to their original position when released.
- To engage the parking brake, push the brake lever down until you hear a click. To release it, squeeze the brake lever back to its original position.

Adjusting the Brakes

The brakes on the Nuvio One are designed to be adjusted to compensate for wear. Follow these steps to adjust them:

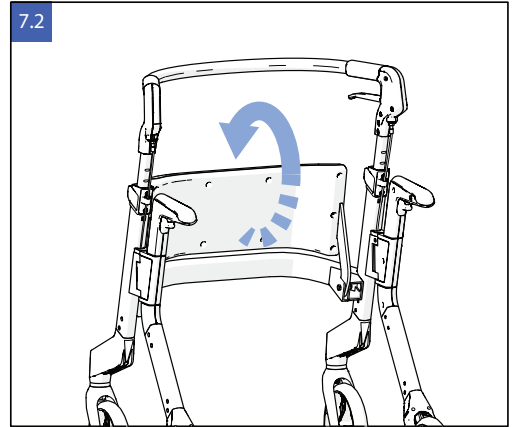
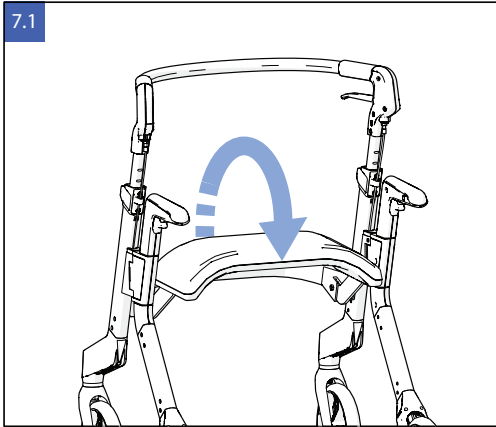


1. Place the Nuvio One on flat, level ground and place the brakes in the unlocked position.
2. Loosen the locknut 1-2 turns using a 10mm wrench (see Figure 5.1A).
3. Rotate the adjustment barrel to increase or decrease the tension on the brake cable (see Figure 5.2C).
4. Adjust the cable tension until the parking brake engages reliably (brake lever down position) and the running brake engages within the motion of the brake lever (brake lever upward motion).
5. After adjustment, retighten the locknut using the 10mm wrench (see Figure 5.2D).



The Nuvio One is equipped with sit-to-stand assist handles to help you safely transition from sitting to standing. Follow these steps to use the sit-to-stand assist handles:

1. Ensure the Nuvio One is on a flat, stable surface.
2. Set the parking brakes (reference Figure 4.3).
3. Place each hand on the left and right sit-to-stand assist handles.
4. Lean slightly forward, pushing down on the handles equally to help lift yourself to a standing position.
5. Once standing, release the parking brakes and proceed with walking.



The Nuvio One is equipped with a stow away seat. Follow these steps to safely use the stow away seat, starting from a standing position:

1. Ensure the Nuvio One is on a flat, stable surface.
2. Set the parking brakes (reference Figure 4.3).
3. With the seat starting in the upright position after unfolding the Nuvio One device, place your hand on the top portion of the seat and pull down toward you until the seat no longer rotates and is perpendicular to the floor, ready for sitting.
4. Turn around facing away from the Nuvio One and sit when ready, using the sit-to-stand handles if needed for additional support.
5. When ready to return to standing, ensure the parking brakes remain on. Stand when ready.
6. Turn to face in the direction of the front of the rollator. Place your hand on the seat to lift it back up into the stowed position. Once stowed, it is ready for standing and walking use.

Sustainability Efforts/Reuse Instructions

- The Nuvio is designed to be durable and long-lasting, promoting reuse.
- Ensure it is properly cleaned and serviced before reassigning or recycling.
- Pass along this guide to the new user.

Limited Warranty Information

What does the manufacturer's warranty cover?

As the manufacturer, Nuvio, Inc. (hereafter "Nuvio") provides a warranty for the Nuvio One (hereinafter "the product") under the following conditions:

- Nuvio offers a 5-year warranty on material and construction defects in the frame during normal use and maintenance.
- All other parts are covered by a general warranty period of 24 months, excluding normal wear and tear from use.
- The warranty period starts from the date of purchase as shown on the proof of purchase.
- The warranty entitles you to repair services, not exchange or return of the product.
- The warranty period does not extend, even after repairs.
- The Nuvio distributor in your country is responsible for transportation to and from the store where the product was purchased (referred to as "the supplier"), but only for repairs covered by the warranty. The shipping method is decided in consultation with the supplier.
- To invoke the warranty, you must provide the following to the Nuvio distributor in your country, along with the defective product: the purchase receipt with the purchase date and a clear description of the issue.
- The warranty is not transferable and can only be used by the original owner.
- The warranty does not affect any legal rights you may have.

Limited Warranty Information continued

What is not covered by the manufacturer's warranty?

The manufacturer's warranty does not apply in the following situations:

- If you have made changes, modifications, or repairs yourself (or if they have been done by others) without prior written permission from the Nuvio distributor in your country or the supplier.
- Incorrect assembly or installation of parts from third parties that are not suitable for the product.
- If defects are caused by neglect, an accident, or use or maintenance that deviates from what is advised in the user guide.
- Unintentional damage, abnormal use, incorrect storage, or inadequate care.
- If the serial number is damaged or removed.
- Customer dissatisfaction with the product in terms of dimensions, weight, functionality, color, or design.
- Damage to the product as a result of normal wear and tear.
- Any discoloration of the frame or parts due to direct or indirect sunlight.
- Damage caused by improper use or non-compliance with the instructions in the guide.
- Costs of shipping the rollator and/or parts to the Nuvio distributor in your country if the warranty period has expired.

Contact Information

For any inquiries, reach out to Nuvio, Inc via www.nuviomobility.com or customer service via email (support@nuviomobility.com) or phone (508-505-4585).